



GATEWAYS HOSPITAL  
& MENTAL HEALTH CENTERS  
FOUNDATION



\*



Kenneth Agema  
Board Secretary  
Gateways Hospital and  
Mental Health Centers  
Foundation



Brian W. Thorne  
President  
Gateways Hospital and  
Mental Health Centers  
Foundation

## Community Report

Big ideas often turn into big projects which ultimately turn into an entire organization working in concert to implement the big idea. Our Adolescent Inpatient Expansion project is just such an idea, and we are beginning to see the results rise up from the ground just behind the hospital. We broke ground on our 28,000 sq ft facility in February 2025, and are on track to open the new 37-bed adolescent addition in July 2027.

Our construction partners and our onsite hospital staff have all been hard at work. Many staff housed at Effie Street have moved to remote work or have relocated to our new adolescent outpatient location in the Chinatown Service Center building.

Nursing, psychology, and OT staff have been flexible in moving individual and group therapy to different parts of the building. Even our neighbors have been very patient with us as earth moving equipment starts early in the morning and the noise of steel being erected has been continuous throughout the day.

All of the noise, displacement, change of routine, and lack of parking will prove worthy of the heavy lifting we ask our patients, staff, and neighbors to endure during this construction project when we open this state-of-the-art facility dedicated to providing top quality care for our vulnerable patients.

As if two expansion projects aren't enough (the second is the substance abuse disorder facility planned for Hoover Street), we are also expanding into the Glendale community. We secured Bond BHCIP funding in May 2025 to help purchase and renovate the former Glendale University College of Law building and will be creating a campus style location for our justice involved clients. Please continue reading our Community Report for more information on this new project.

We look forward to sharing more information with you in the coming months, and are pleased to share our 2025 Community Report.

Sincerely,

Kenneth Agema  
Board Secretary  
Gateways Hospital and Mental  
Health Centers Foundation

Brian W. Thorne  
President  
Gateways Hospital and Mental  
Health Centers Foundation

**Pictured on the cover:** A. Our new Glendale facility (the former Glendale University College of Law building)  
B. 37-Bed Adolescent Expansion – Effie Street  
C. Adolescent Summer Day Camp 2025



# Workforce Development Update

*Two years ago, we highlighted three programs that received state funding to increase the number of qualified individuals entering/remaining in the Behavioral Health and Substance Abuse Disorder Workforce.*

*We are proud to share our results.*

## DHCS Mentored Internship Program

The California Department of Health Care Services (DHCS) granted three awards to Gateways Hospital for its Mentored Internship Program (MIP). The goal of the MIP project is to enhance the professional development of diverse students through thoughtful mentored internships and to grow the future behavioral health (BH) workforce.

### Inpatient

Through two awards over 30 months, 18 intern students were secured for our inpatient programs. These interns gained practical on-the-job experience and worked closely with their clinical “mentor”.

Elizabeth Morris, Psy.D., Director of Psychology, says this about the MIP program: “Through the MIP program we were able to broaden and expand services to our patients by funding interns and supervisors who served as mentors to professionals in training in the mental health field. We recruited 18 student interns and four mentors. The funding provided us a wonderful opportunity to offer employment to those students we trained, hiring three former students as full-time employees to join our psychology department.”

## HCAi Loan Repayment and Retention Bonus Program

The California Department of Health Care Access and Information (HCAi) awarded Gateways Hospital \$1,168,125 through its Community Based Organization Behavioral Health Workforce Agreement. This program provided retention bonuses or loan repayment grants for clinical staff who needed assistance with their student loans. In the first two years of this three-year program, 26 staff received loan repayment grants totaling \$613,000, and 29 staff were awarded retention bonuses totaling \$197,000. Staff who received these awards have made a commitment to remain employed with Gateways Hospital for at least two years.

### CONREP

Through one award over 18 months secured for our Conditional Release Program (CONREP), 16 interns worked both part- and full-time to gain much needed experience working with some of our most challenging clients.

The MIP grant helped CONREP secure membership within the Association of Psychology Postdoctoral and Internship Centers (APPIC), a nationally recognized organization.

Nicole L. Paglione, Psy.D., Clinical Director states, “I am beyond grateful for the MIP program, as it allowed us to recruit and reward quality trainees, two of whom we were able to hire as full-time behavioral mental healthcare workers. The MIP Program also augmented our existing internship program, facilitating growth and excellence in the training, supervision, and mentorship we offer to burgeoning mental health practitioners. It was a true honor and privilege to be a part of such a well-intentioned and necessary program.”

# Glendale Expansions

## Justice Involved Campus

### Welcome Plaza

- Building Identity
- Architectural Entryway
- Wayfinding Signage



### Community Garden

- Prefabricated Raised Planters
- Drought Tolerant Planting
- DG Pathways
- Gravel rooms



### Garden Rooms

- Drought Tolerant Planting
- DG Pathways
- Quiet Garden Nooks
- Seatwalls and Fixed Furniture
- Smoking Area
- Vegetative Noise Buffer



### Gathering Hub & Fitness

- Flexible Lawn Space
- Outdoor Dining
- Outdoor Lounge
- Seatwalls and Fixed Furniture
- Outdoor Fitness Equipment
- Shade Trees
- Vegetative Noise Buffer



### Perimeter Greening

- Security Fencing
- Drought Tolerant Planting
- Shade Trees

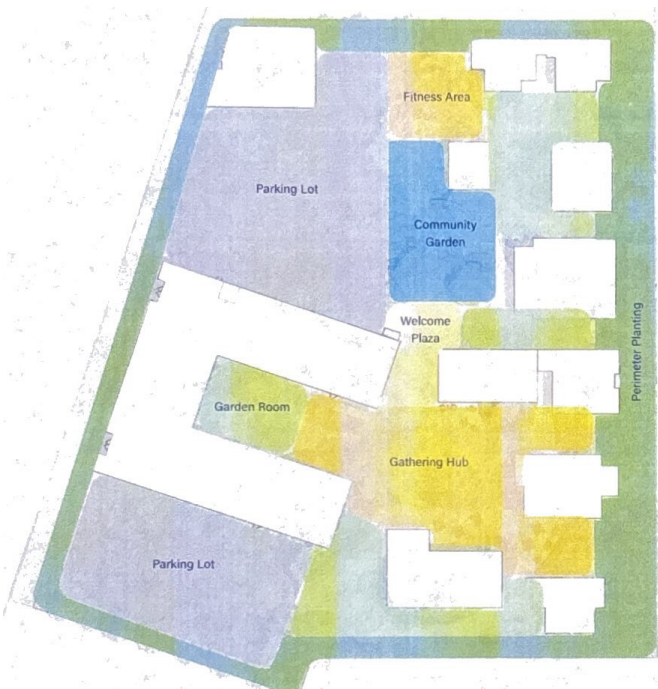


## Gateways Hospital is expanding into Glendale

We recently acquired the former Glendale University College of Law and adjacent residential parcels to create a justice involved campus. This facility will provide a 24-hour residential treatment program with support, supervision, and rehabilitative services for adults with severe mental disorders.

A generous grant of \$35,000,000 from the California Department of Health Care Services, Bond BHCIP program, will enable Gateways to provide exceptional care to clients reintegrating into the community from other local locked psychiatric facilities through crisis service, residential stays and outpatient services.

Benefits of this campus include a shorter length of stay, quicker transitions between levels of care, and lower re-hospitalization rates. The new facility is expected to be operational in 2029.





## Enhanced Care Management

**G**ateways Hospital has launched a new managed care program called Enhanced Care Management (ECM). Gateways was awarded \$731,735 from a Department of Health Care Services Providing Access and Transforming Health (PATH) grant to fund Gateways program infrastructure development and Managed Care Medi-Cal certification.

The ECM program is a new Medi-Cal benefit that addresses the clinical and non-clinical needs of the highest-need adult and youth Medi-Cal clients by providing community-based intensive coordination of mental health, substance use disorders, social determinants of health, and medical services. Anthem, L.A. Care Health Plan, Molina Health Care and Kaiser Permanente, are a few examples of local health plans offering this new benefit. The program will provide a team of Lead Care Managers (LCM) and Community Health Workers (CHW) who will meet clients where they are—on the street, in a shelter, in their doctor's office, or at home.

The ECM program started statewide in January 2022. As of the latest reports, over 176,000 Medi-Cal members have received ECM services demonstrating significant growth and impact on improving health outcomes for this vulnerable population.

## City of Glendale Mental Health Services Pilot Program

**G**ateways Hospital and Mental Health Centers has entered into a new partnership with the City of Glendale totaling \$813,000 to provide mental health services for individuals experiencing mental health or substance use disorders residing in City housing programs over the next year.

There are two components to our pilot program: Residential Treatment and Intensive Mental Health Case Management.

**Gateways Percy Village** has dedicated five (5) residential treatment beds providing housing, mental health treatment, and case management services for City of Glendale clients. This partnership gives the City's Housing Outreach Teams additional resources to ensure those struggling with mental health and substance use have access to temporary housing and treatment.

**Gateways Intensive Mental Health Case Management Program** provides case management to support up to 25 households currently utilizing the City's Emergency Housing Vouchers (EHVs) program. Services will include daily case management and are coordinated by a full-time Mental Health Case Manager. This role focuses on improving client stability and well-being by coordinating and monitoring clinical and social services, with the goal of reducing the need for higher levels of care (e.g., psychiatric, substance use, and emergency medical services) and loss of housing.

# Topping Out

On September 19, 2025, we celebrated this builders' rite traditionally held when the last beam is placed at the top of a structure.



Work continues with the steel structure, plumbing the building, and completing the deck installation. Our schedule calls for the building to be enclosed by late November or early December 2025.

We are still on track to open the building in June 2027.



## 37-Bed Adolescent Expansion – Effie Street

*Groundbreaking at the site was held February 19, 2025*



Construction on our new 28,000 sq. ft. Adolescent Unit is well underway. The facility will include 37 beds, group therapy space, medication stations, consultation rooms, dining space, and an outdoor activity area.



## 2025 Gateways Hospital Board

### **John Calderone**, Ph.D.

Chair, Board of Directors  
CEO, Olympia Medical Center (retired)

### **Chelby Crawford**

Board Member  
Luxury Property Specialist, Coldwell Banker Realty

### **Geoffrey Moore**, Esq.

Vice Chair, Board of Directors  
President, Mutual Gas Co.

### **Rojean Kashanchi**

Founder and Project Director  
Frontline Collective

### **Craig Morris**, CPA

Treasurer, Board of Directors  
Partner, KPMG (retired)

### **Joy Musry**

Board Member  
Attorney at Law

### **David Sturman**, Esq.

Secretary, Board of Directors  
Immigration Attorney

### **Joe Wegner**, CHRO

Board Member  
Executive, Core-Mark International  
(retired), Board Member, Core-Mark Family

### **Phil Wong**, Psy.D.

Board Member  
Chief Executive Officer, Gateways Hospital and  
Mental Health Centers

## Gateways Leadership Team

### **Phil Wong**, Psy.D.

Chief Executive Officer

### **Kimberly Guajardo**, Psy.D.

Senior Director of Program  
Development-DMH

### **Fay Ji**

Chief Financial Officer

### **Cynthia E. Lermond**, Psy.D.

Administrative Director/Community Program Director

### **Meredith Mead**, PMHNP-BC

Senior Director of Clinical Services

### **Jennifer Roecklein**, MA CPHQ

Vice President of Operations

### **Brian Thorne**

President, Gateways Hospital and Mental Health  
Centers Foundation

### **Imani J. Walker**, DO

Chief Medical Officer

### **Kim Warneke**

Vice President, Human Resources

## 2025 DONORS

### **\$1,000,000+**

California Dept. of Health Care Services-Behavioral  
Health Continuum Infrastructure Program Round 4,  
Children and Youth

### **\$100,000-\$999,999**

California Dept. of Health Care Access and Information-  
Community-Based Organization Behavioral Health  
Workforce Grant (HCAI)

California Dept. of Health Care Services-Behavioral  
Health Recruitment and Retention (BHRR)

California Dept. of Health Care Services -Mentored  
Internship Program (MIP) CONREP

California Dept. of Health Care Services-Mentored  
Internship Program (MIP) Psychology Round 2

California Dept. of Health Care Services-Providing Access  
and Transforming Health (PATH)

Substance Abuse and Mental Health Services  
Administration (SAMHSA)

### **\$25,000-\$999,999**

Advocates for Human Potential  
Clayco

Lee & Associates Commercial  
Logically

Netsmart Technologies, Inc.

### **\$5,000-\$24,999**

Wendy and Ken Agema

Arthur J. Gallagher & Co.

BackSwing Golf Events, Inc

Banc of California Charitable Foundation

Burger, Meyer & D'Angelo, LLP

California Lutheran Homes (Michele Bignardi)

Cashen Psychological Consulting, Inc.

Community Development Resource Group

Cope Healthcare Consulting, Inc.

COSCO Fire Protection

Michael Fong and Benjamin Cioppa-Fong

Dairy King Milk Farms

Herrick Steel

IMA, Inc.

LightBay Capital Foundation

Orion Risk Management

ProScience Research Group

Navroz Rahemtulla

Risk Placement Services

S.L. Leonard & Associates

Vertex Civil LLC

Wexford, Inc.

### **\$1,000-\$4,999**

Advantage HCS LLC

Air Flow Mechanical

ArentFox Schiff, LLP

Jess Beattie

Blue Line Shield, Inc.

Dorene and John Calderone

Capital Group, Private Client Services

Je Choi, CPA

Chelby Crawford

CSI Electrical Contractors, Inc.

Elevate Public Affairs

Fay Ji

General Admission - Los Angeles

Kathleen Hatfield

HMC Architects

Stella Ho

Peter Hsu

IMEG Corporation

Karcher Insulation

KMM Law, LLP

Craig Lawson & Co., LLC

Los Angeles County District Attorney's Office

ME Engineers

Medix Corp

MERANI Psychiatric Services

Charles Meyer

Marissa and Geoff Moore

Allison and Craig Morris

Ocampo Capital

Nicole Paglione

Pan-Pacific Mechanical

Kevin Rodin

Salsbury Engineering, Inc.

Karen Salsbury

Scott Sandler

Scott Schuster

Seacliff Mechanical

Securitas

Sharpe Interior Systems

Mr. and Mrs. Richard Solle

SOS Global Consulting

Talimar Systems, Inc.

Kathy and Brian Thorne

United Imaging

Lisa and Joe Wegener

Whittier Advisors

Phil Wong

Steffan Wright

### **\$500-\$1,000**

Colleen Carroll

Arthur Chang

Israel Goldstein

Jennifer Lahoda

Cynthia Lermond

Sandi Long

Momentum Telecom, Inc.

Mary Mondragon

Elizabeth Morris

Kristina Moyao

Steve Rivera

Ryan Russell

Andrew Soffa

Gladys Sturman

Wakeland Housing And Development Corp.

Windes, Inc.

## Foundation Board Members

**Kenneth Agema**, Secretary  
General Manager (retired), Steel Service Center,  
Member of the National Alliance of Mental Illness

**Jess Beattie**, LCSW, ACM-SW  
Director, Patient and Family Services,  
USC Verdugo Hills Hospital

**Rojean Kashanchi**  
Founder and Project Director  
Frontline Collective

**Dorene Calderone**  
Educator/Administrator (retired)  
Archdiocese of Los Angeles

**Farrah Khaleghi Aizenman**, Psy.D.  
Licensed Clinical Psychologist

**Natasha Milatovich**, Ed. D., MBA, MHRM  
Sr. Vice President, Chief Human Resources Officer  
Altamed Health Services

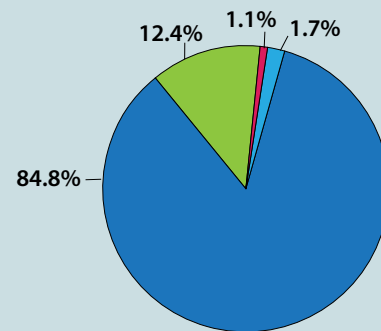
**Russell Smith**  
CFO Level Business Consulting

**Brian Thorne**  
President, Gateways Hospital and  
Mental Health Centers Foundation

**Phil Wong**, Psy.D.  
Board Member  
Chief Executive Officer,  
Gateways Hospital and Mental  
Health Centers

## The Numbers

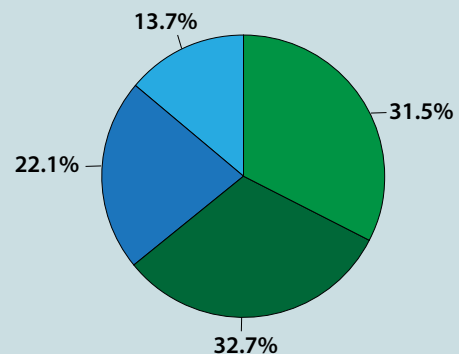
### Who Supported Us:



**\$3,278,940**

Individuals – 1.7%  
Private Foundations – 1.1%  
Public Dollars – 84.8%  
Corporate Gifts – 12.4%

### Dollars Raised For:



**\$3,278,940**

Patient Care – 31.5%  
Workforce Development – 22.1%  
Facility Infrastructure – 32.7%  
Unrestricted – 13.7%